

Time lags and reverberation in the lamp-post geometry of the compact corona illuminating a black-hole accretion disc

Michal Dovčiak

Astronomical Institute
Academy of Sciences of the Czech Republic, Prague

Workshop of Institute of Theoretical Physics, Charles University
24th May 2013, Astronomical Institute ASCR, Ondřejov

Acknowledgement

StrongGravity (2013–1017) — EU research project funded under the Space theme of the 7th Framework Programme on Cooperation

Title: **Probing Strong Gravity by Black Holes Across the Range of Masses**

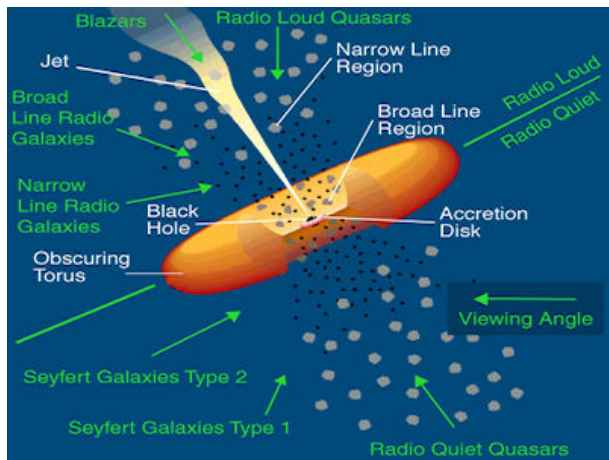
Institutes: AsU, CNRS, UNIROMA3, UCAM, CSIC, UCO, CAMK

Webpages: <http://stronggravity.eu/>

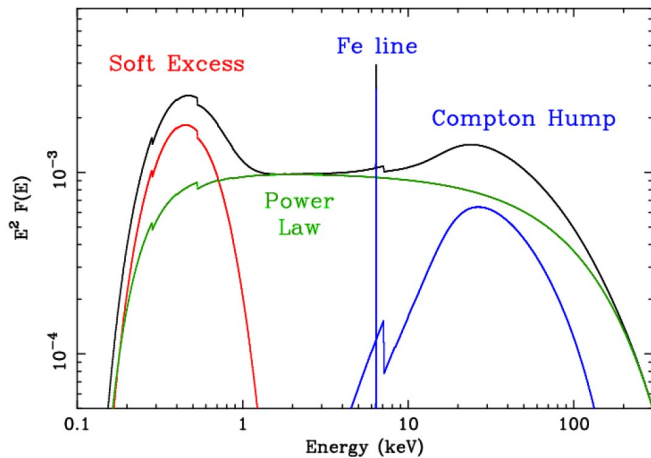
http://cordis.europa.eu/projects/rcn/106556_en.html



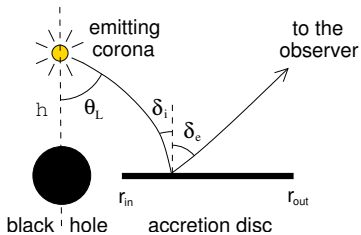
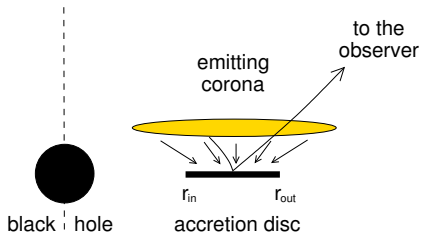
Active Galactic Nuclei – scheme



Active Galactic Nuclei – X-ray spectrum

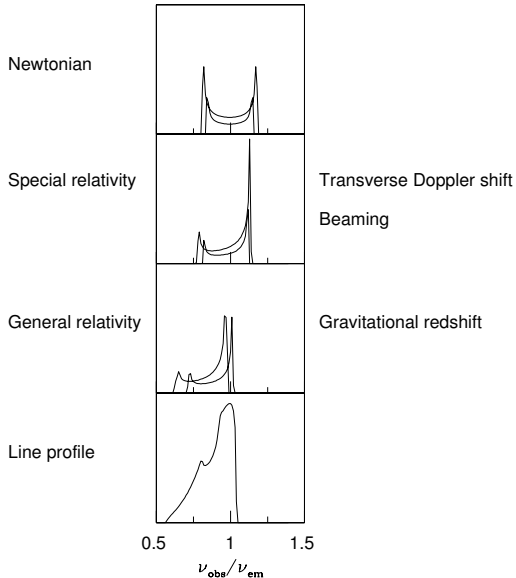


Innermost part of AGN – scheme



Relativistic iron line

$$G(g) = \sqrt{\frac{g_+ g_-}{(g_+ - g)(g - g_-)}} g^2 \cos[\theta_e(g)] \ell(g) \left[\frac{\partial \psi}{\partial \varphi}(g) \right]^{-1}$$



Fabian et al. (2000)

$$g = 1 - \frac{v_k}{c} \sin \theta_o \sin \varphi$$

$$\theta_e = \theta_o \quad \ell = 1 \quad \psi = \varphi$$

$$g = \left[\gamma \left(1 + \frac{v_k}{c} \sin \theta_o \sin \varphi \right) \right]^{-1}$$

$$\theta_e = \theta_o \quad \ell = 1 \quad \psi = \varphi$$

$$g = [U_k^t (1 - \Omega_k \sin \theta_o \alpha)]^{-1}$$

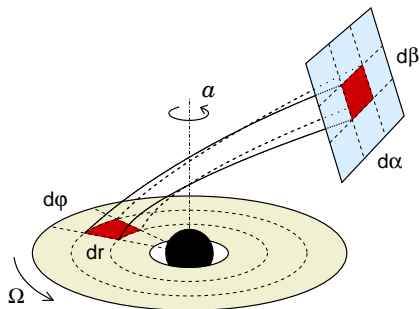
$$\cos \theta_e = \sqrt{\beta^2 + (\alpha^2 - a^2) \cos^2 \theta_o} / r$$

$$\ell = \frac{dS_o}{dS_{\text{loc}}}$$

$$\sin \psi = \frac{2(\alpha - \bar{\alpha})}{\alpha_+ - \alpha_-}$$

$$F(g) = \int_{r_{\text{in}}}^{r_{\text{out}}} dr r R(r) \sum_{j=1}^2 G_j(g) M_j(\mu_i, \mu_e)$$

Transfer function for spectrum



$$\Delta I = \int_{\Sigma_{\alpha,\beta}} d\alpha d\beta \underbrace{g^\gamma}_{\text{transfer function } G} I_{\text{loc}}(\alpha, \beta)$$

$$\Delta I = \int_{\Sigma_{r,\varphi}} r dr d\varphi \underbrace{g^{\gamma-1} \mu_e \ell}_{\text{transfer function } G} I_{\text{loc}}(r, \varphi)$$

transfer function G

$$g = \frac{E}{E_{\text{loc}}}$$

$$\mu_e = \cos \theta_e$$

$$\ell = \frac{dS_0}{dS_{\text{loc}}^\perp}$$

$$\gamma = 4 \quad \text{for} \quad \frac{dE}{dt d\Omega dS}$$

$$\gamma = 3 \quad \text{for} \quad \frac{dE}{dt d\Omega dS dv} \quad \text{or} \quad \frac{dN}{dt d\Omega dS}$$

$$\gamma = 2 \quad \text{for} \quad \frac{dN}{dt d\Omega dS dv}$$

$$\frac{d\alpha d\beta}{r dr d\varphi} = \frac{dS_0}{dS_{\text{loc}}^\perp} \times \frac{dS_{\text{loc}}^\perp}{dS_{\text{loc}}} \times \frac{dS_{\text{loc}}}{dS} = \frac{\ell \mu_e}{g}$$

Energy shift and amplification

Dependence on spin

$$F_{\text{loc}} = r^{-3} \times \delta(E - E_{\text{rest}})$$

Dependence on inclination

$$F_{\text{loc}} = r^{-3} \times \delta(E - E_{\text{rest}})$$

Historical note on relativistic Fe $K\alpha$ line

Spectrum from the black hole inner accretion disc:

Cunningham C. T. (1975) *The effects of redshifts and focusing on the spectrum of an accretion disk around a Kerr black hole*, ApJ, **202**, 788

Relativistic broad line profiles:

Fabian A. C., Rees M. J., Stella L. & White N. E. (1989) *X-ray fluorescence from the inner disc in Cygnus X-1*, MNRAS, **238**, 729

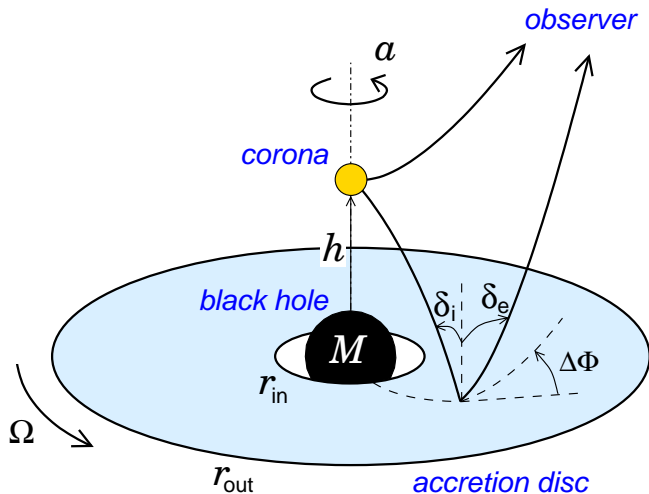
Observations:

Tanaka Y. et al. (1995) *Gravitationally redshifted emission implying an accretion disk and massive black hole in the active galaxy MCG-6-30-15*, Nature, **375**, 659

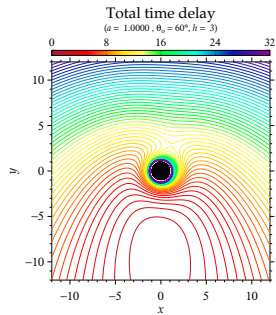
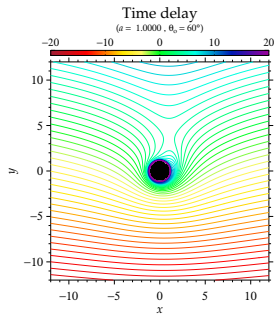
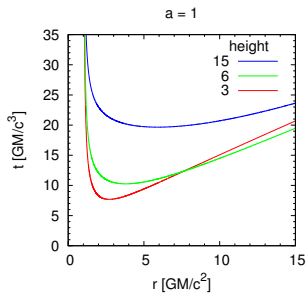
Fabian A. C. et al. (2002) *A long hard look at MCG-6-30-15 with XMM-Newton*, MNRAS, **335**, L1

Miller J. M. (2007) *Relativistic X-Ray Lines from the Inner Accretion Disks Around Black Holes*, Annual Review of Astronomy & Astrophysics, **45**, 441

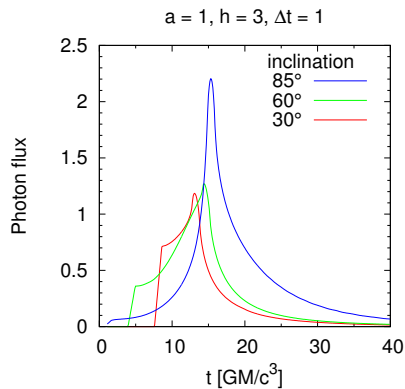
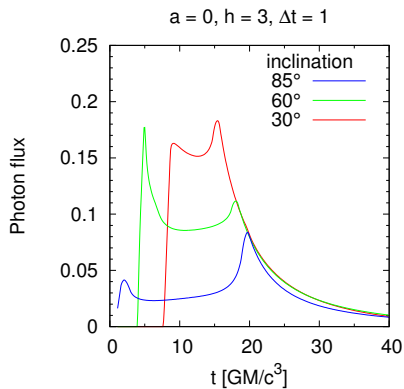
Scheme of the lamp-post geometry



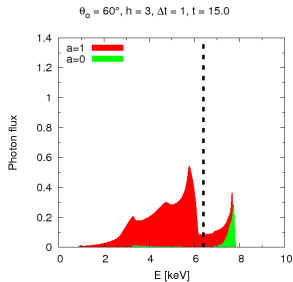
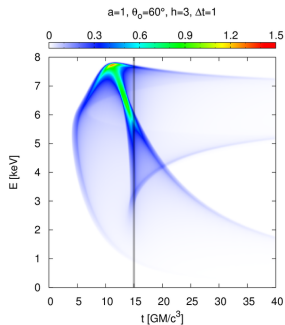
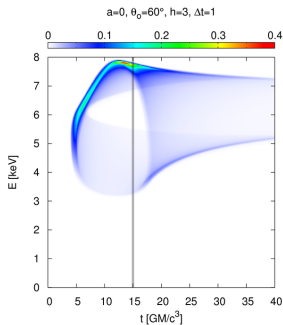
Time delay



Light curve



Dynamic spectrum



Transfer function for reverberation

Stationary emission from the accretion disc:

$$F(E) = \int r dr d\varphi G(r, \varphi) F_1(r, \varphi, E/g)$$

Response to the on-axis primary emission:

$$F(E, t) = \int dt' \int r dr d\varphi G(r, \varphi) \times \\ N_p(t') N_{\text{inc}}(r) M(r, \varphi, E/g, t' + t_{\text{pd}}) \delta([t - t_{\text{do}}] - [t' + t_{\text{pd}}])$$

Line reverberation:

$$F(E, t) = \int dt' N_p(t') \int r dr d\varphi \psi_0(r, \varphi) \delta(E - gE_{\text{rest}}) \delta([t - t'] - \underbrace{[t_{\text{pd}} + t_{\text{do}}]}_{\Delta t})$$

Transfer function \rightarrow response to a flare [$N_p(t') = \delta(t')$]:

$$\psi(E, t) = \sum_{\substack{g = E/E_{\text{rest}} \\ t_{\text{pd}} + t_{\text{do}} = t}} \psi_0 \frac{r}{E_{\text{rest}}} \left| \frac{\partial(g, \Delta t)}{\partial(r, \varphi)} \right|^{-1}$$

$$F(E, t) = \int dt' N_p(t') \psi(E, t - t')$$

$$\frac{\partial(g, \Delta t)}{\partial(r, \varphi)} = \frac{\partial g}{\partial r} \frac{\partial(\Delta t)}{\partial \varphi} - \frac{\partial g}{\partial \varphi} \frac{\partial(\Delta t)}{\partial r} \neq 0 \quad \Rightarrow \quad \nabla g \nparallel \nabla(\Delta t)$$

$$G = g \mu_e \ell$$

$$g = \frac{E}{E_1}$$

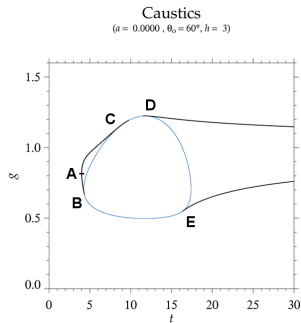
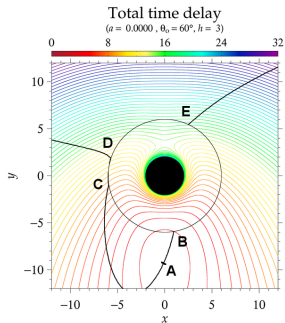
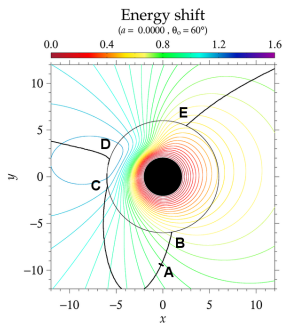
$$\mu_e = \cos \delta_e$$

$$\ell = \frac{dS_o}{dS_1^\perp}$$

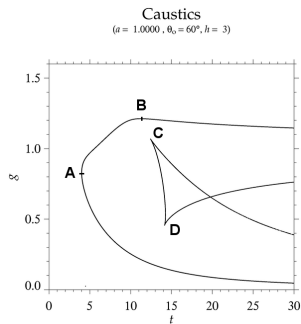
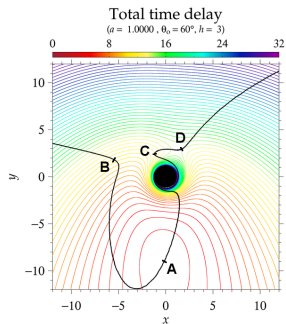
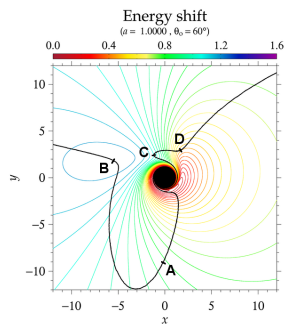
$$N_{\text{inc}} = g_{\text{inc}}^\Gamma \frac{d\Omega_p}{dS_{\text{inc}}}$$

$$\psi_0 = g G N_{\text{inc}} M$$

Caustics – Schwarzschild case

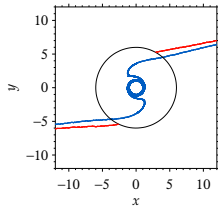


Caustics – extreme Kerr case

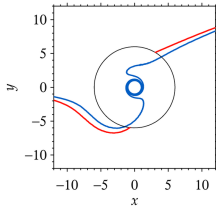


Caustics

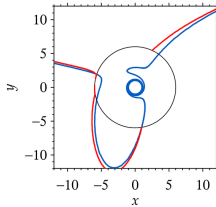
$\theta_0 = 5^\circ, h = 3$



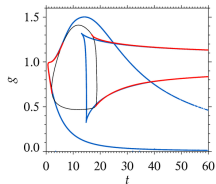
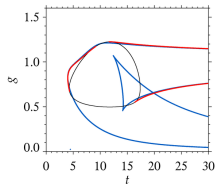
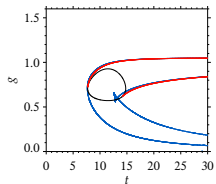
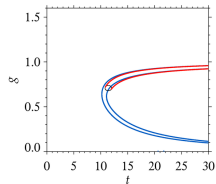
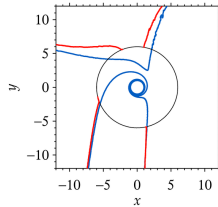
$\theta_0 = 30^\circ, h = 3$



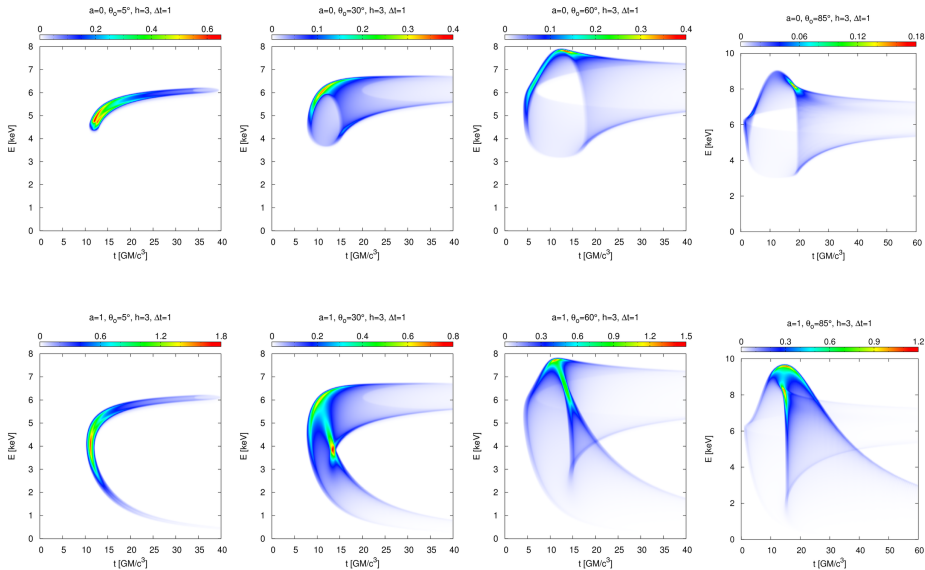
$\theta_0 = 60^\circ, h = 3$



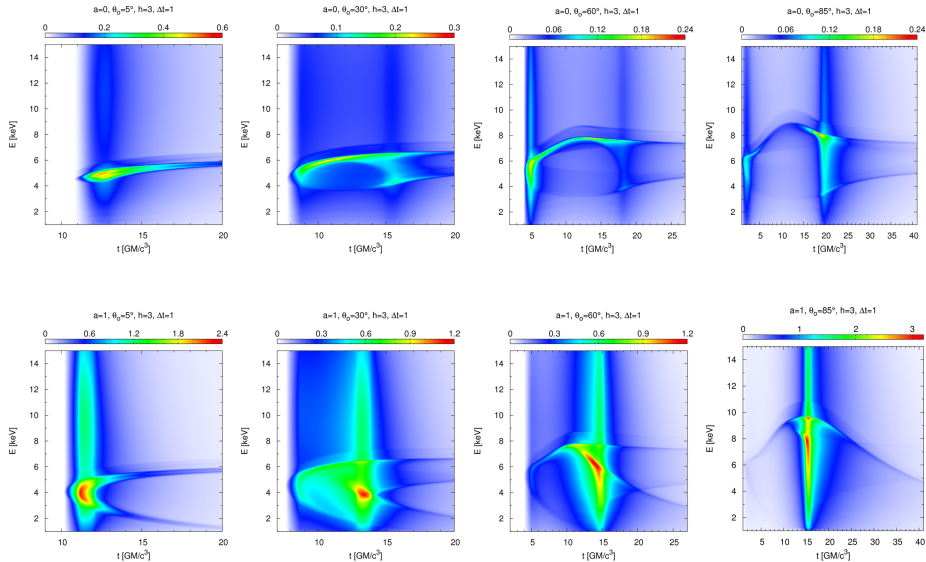
$\theta_0 = 85^\circ, h = 3$



Dynamic spectrum – narrow spectral line



Dynamic spectrum – the whole reflection



Dynamic spectrum – ionised disc

$$E^2 \times F(E)$$

